

West River Sailing Club

2007 GENERAL SAILING INSTRUCTIONS

1 RULES

The regatta will be governed by the rules as defined in the current Racing Rules of Sailing (RRS).

2 ENTRIES

Competitors may enter by delivering a completed entry form and paying the entry fee to the race committee as stated in any notice of race. Three boats must be entered and in the racing area for a race.

3 NOTICES TO COMPETITORS

Notices to competitors will be posted on the clubhouse window near the flagpole.

4 SIGNALS MADE ASHORE and ON THE WATER

Signals made ashore will be displayed from the flagpole in front of the clubhouse. If a postponement (AP) is signaled ashore, the warning signal will be made not less than 30 minutes after AP is lowered. Signals such as designating a racing area, choice of sound-signal starting system, or number of races may be given on the water by displaying flag L with one sound.

5 SCHEDULE

The warning signal for the first race will be at 11:00 AM for sanctioned regattas, 1:00 PM for club races, or 6:00 PM for Friday night races. Subsequent races will be held as soon as possible.

6 CLASS FLAGS

The class flag will show the class insignia or as stated by a notice to competitors.

7 RACING AREA

The racing area will be either the dock, cove, inside or outside area shown on the drawing of West River.

8 COURSES and MARKS

Courses will be Windward-Leeward or Windward-Leeward-Triangle with options in RRS Appendix L, designated by a letter "W" or "O" (respectively) posted to starboard of the signals boat. Courses with a leeward finish will be designated with the number of legs, "W4" or "O5." Marks will be inflated orange cylinders or balls.

9 STARTING AND FINISHING LINES and STARTING SYSTEM

The starting or finishing line will be between a staff on a RC boat displaying a yellow flag or "S" flag and a nearby mark. Rule 26 is the default starting system. The Sound Signal Starting System of RRS Appendix Q may be used on notice to competitors.

10 TIME LIMIT

The time limit for each race will be 2 ½ hours for the first boat to finish. Boats finishing more than 45 minutes after the first boat that sails the course finishes will be scored DNF. This changes RRS 35.

11 PROTESTS

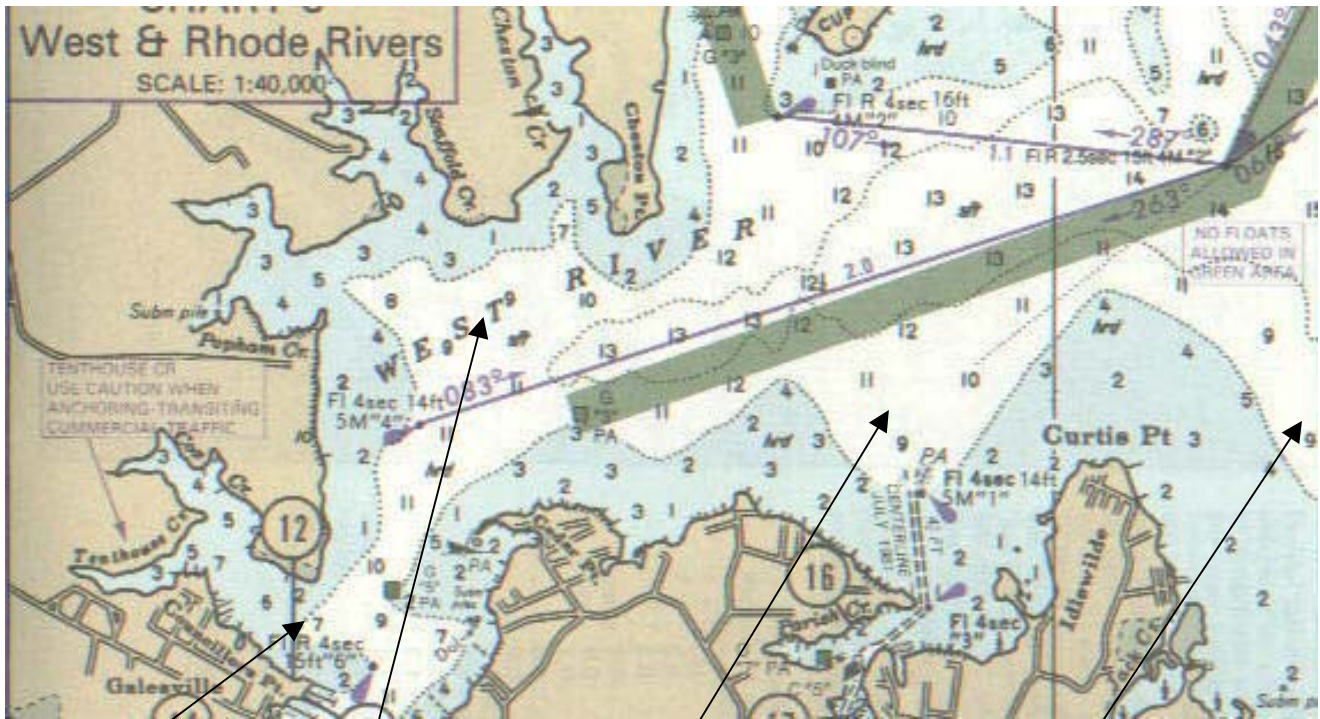
Protests shall be delivered to the race committee within one hour after the race committee finish boat docks. The protest time limit and a list of protests received will be posted on the notice board. Hearings will be held as soon as possible after racing each day in the clubhouse board room.

12 SCORING

The Low Point System of Appendix A of the racing rules will apply. If at least six races are completed, each boat's worst score will be excluded from her series score. One race constitutes a series.

13 TROPHIES

Trophies will be awarded as described in any notice of race or series.



Dock

Cove

Inside

Outside

Windward-Leeward Course (W): Options for this course include deleting the last windward leg (W4), using an offset turning mark at the windward mark, and using the leeward and windward marks as starting and finishing marks.

Windward-Leeward-Triangle Course (O): Options for this course include deleting the last windward leg (O5), varying the interior angles, and using the leeward and windward marks as starting and finishing marks.

